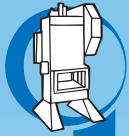


# Control system Multi



Press lines



Power Presses



Coil-handling



Nibbler



Ancillary



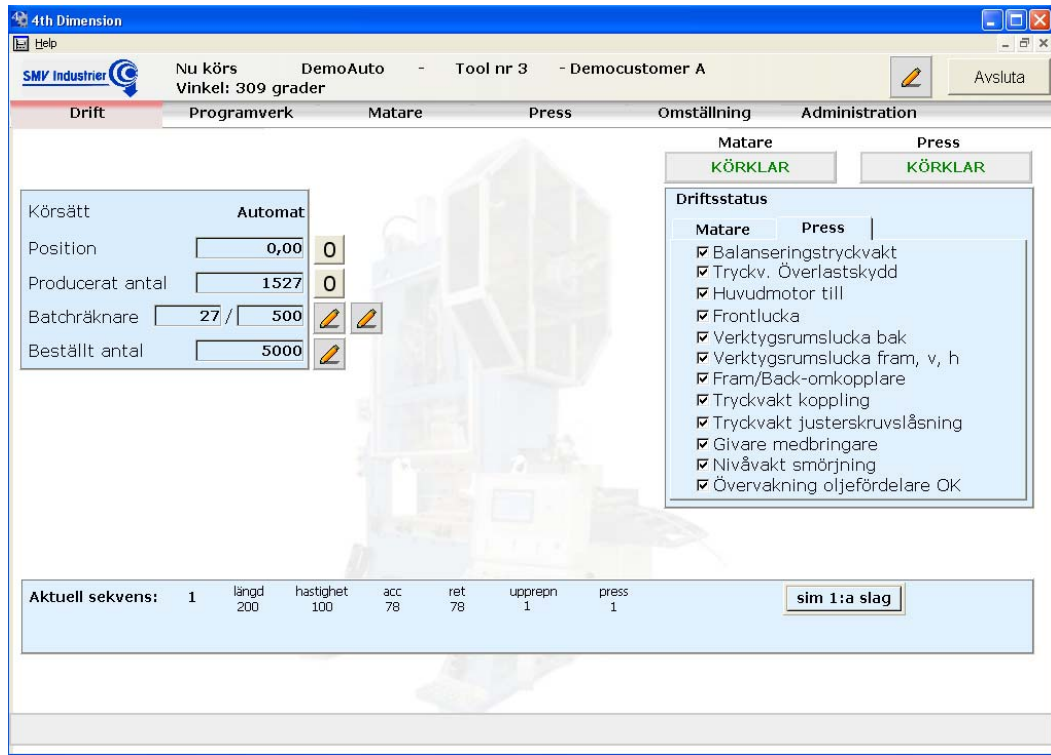
Service



Automation



Education



## SMV Control system Multi

SMV Industrier manufactures power presses and coil handling equipment for sheet metal and has now developed a new advanced and easy operated control system.

SMV Industrier has a long experience of developing control systems.

Already in the eighties SMVs control system PFC was presented, an integrated system for press and servo roll feed. It was a technical innovation when it was introduced. The PFC-system is in operation on hundreds of presslines and with this system considerable increase of productivity has gained.

SMV is now introducing the next generation of control system, **Multi**.

**Multi** includes all of PFC's functions and has besides furthermore functions, for example teach in, optimized speed, network integration and presentation of production data...

The system is well tested and has already been delivered to a number of customers.

Smålandsstenars Mekaniska Verkstad SMV AB  
Tel: +46(0)371 343 40 • Fax: +46(0)371 343 41  
[marketing@smv.se](mailto:marketing@smv.se) [www.smv.se](http://www.smv.se)



The control system Multi is a modern, easy programmed system with memory function which gives increased profitability and productivity. The system is built up by standard components and can be combined after the functions the customer require. The following functions are available:

### Manual power press

The press module is based on a safe system for manual operation. In addition mechanical cams and two hand control/light guard is required.

### Automatic power press

Basic functions for automatic operation

- Slide adjustment
- Stroke change
- Variable speed
- Temperature monitoring

### Electronic cam control

- Top position correction
  - Stop point, speed, stroke length
- Programming of in- and outputs
- Teach in function
- Dynamic cams

### Energy- and press force monitor

- Monitoring of press force, top stop
- Programmable right-left, min-max
- Entire press stroke is showed
- Energy calculation, stop time measuring

### Servo roll feed

- Feed length, acceleration and retardation
  - Optimized speed and acceleration eligible
- Sequence feeding
  - Shuttle control
- Roll lift and feed line height adjustment

### Generally

- Network integration, programming offline
- Interface against web, e-mail, business system
- Processing and presentation of production data

### Advantages

- One common control system for the pressline
- The control system is modular = addable
- Simple programming, reduces set up times
- Modern and rapid control system for manual power presses
- Support via network connection (internet)

### Application examples

- New automatic pressline, new manual press
- Exchange of old control system on existing automatic and manual presses and servo roll feeders.

## Program editor

