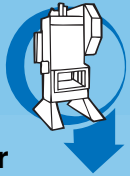


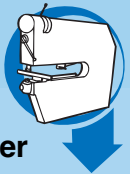
Press lines



Power Presses



Coil-handling



Nibbler



Ancillary



Service



Automation



Education

Scrap Chopper series PS



SMV Scrap Chopper PS173 and PS323

The SMV scrap chopper is a robust unit incorporating angled blades operated by a double acting pneumatic cylinder. It can be used for cutting the scrap metal ladder into convenient lengths or for cutting coil strip into accurate blank sizes.

The scrap chopper can be supplied for fixed mounting to a bracket on the side of the press or with a special hinged mounting, enabling it to be either closed-up to the press or swung aside out of use when components are discharged through the side of the press.

Both mountings allow for height adjustment as well as reverse movement to enable shearing to take place in the best position in the ladder or strip.

All scrap choppers are delivered with a protection shield over the blade area.

Smålandsstenars Mekaniska Verkstad SMV AB
Tel: +46(0)371 343 40•Fax: +46(0)371 343 41
marketing@smv.se www.smv.se



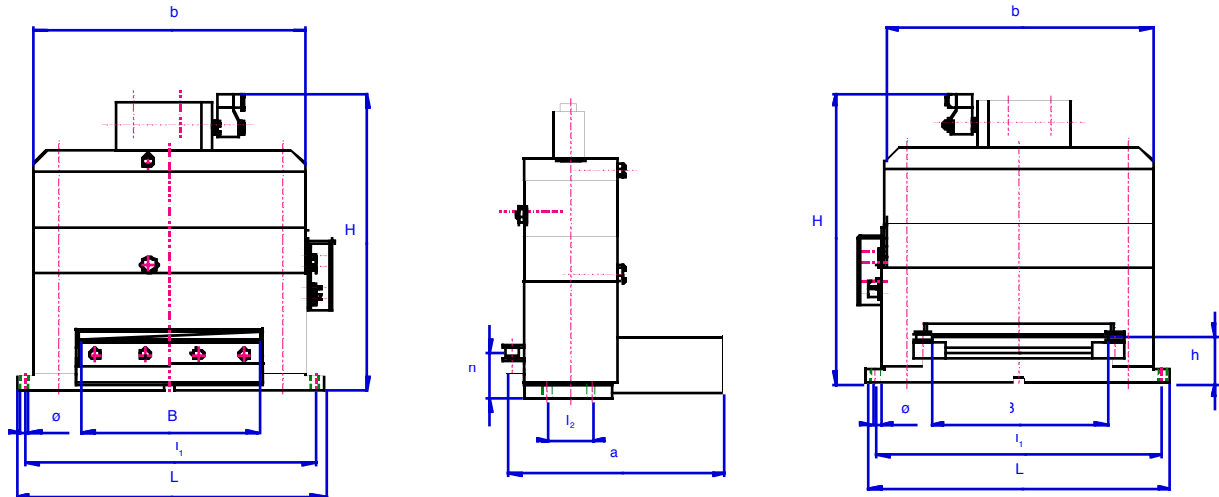
SMVs Scrap Chopper includes the following equipment

- Angled blades, to benefit shear force and reduce noise
- Guides, individually adjustable
- Shield cover
- To feed; left to right
- Standard colour blue RAL 5015 and RAL 5024
- 2 manuals

Options

Optional equipment for the Scrap Chopper on a separate Optionlist.

Technical Data		PS173	PS323
Shear width of material max	mm	300	300
Shear force at 0,6 MPa	kN	17	32
Stroke speed max	spm	160	120
Air consumption free air at 0,6 MPa and 100 spm	l/min	350	650
Weight incl bracket	kg	180	200



Dimensions	B	h	H	b	l ₁	l ₂	L	a	ø
PS173	300	80	404	460	490	75	520	365	13
PS323	300	80	495	460	490	75	520	365	13

Cutting description of PS323

Cutting description

Material: SIS 1312
 Air pressure: 0,6 MPa
 Stroke length: 1170 mm
 Hose diameter: 19 mm

