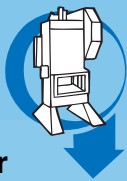


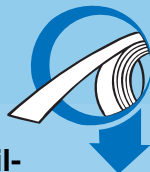
# Decoiler series H



Press lines



Power Presses



Coil-handling



Nibbler



Ancillary



Service



Automation



Education



## SMV Decoiler

SMV has an extensive range of Decoilers designed and engineered for a smooth efficient un-reeling of coil material into the press feed line.

All Decoilers are constructed with a robust fabricated steel frame and can if necessary be moved from one press line to another by fork lift truck.

Decoilers are available in single or double mandrel format, although a single mandrel unit can be re-engineered into a double mandrel format at any time.

Decoilers can be engineered with different levels of equipment to conform to customer requirements. These allow for free running, gear wheel motor and variable speed with frequency converter. Other options include electronic loop control, hydraulic mandrel expansion and pneumatically operated snubber rolls.

SMV will engineer more sophisticated Decoiler installations, providing rail type mountings, linking Decoiler and Straightener, as well as the addition of horizontal Decoiler movement and the installation of a hydraulic coil carrier for easier coil loading.

Smålandsstenars Mekaniska Verkstad SMV AB  
Tel: +46(0)371 343 40 • Fax: +46(0)371 343 41  
marketing@smv.se www.smv.se

**SMV Industrier**



**The SMVs Decoiler includes the following equipment**

- Adjustable pneumatic sliding brake (not DF)
- Manual expansion of mandrel
- Support for material
- To feed; left to right
- Standard colour blue RAL 5015 and RAL 5024
- 2 manuals

**The SMVs Driven Decoiler DF also includes the following equipment**

- Electromechanical brake
- Loop control at the base of the frame
- Driven
- Variable speed

SMVs Double Decoiler data on separate productsheet.

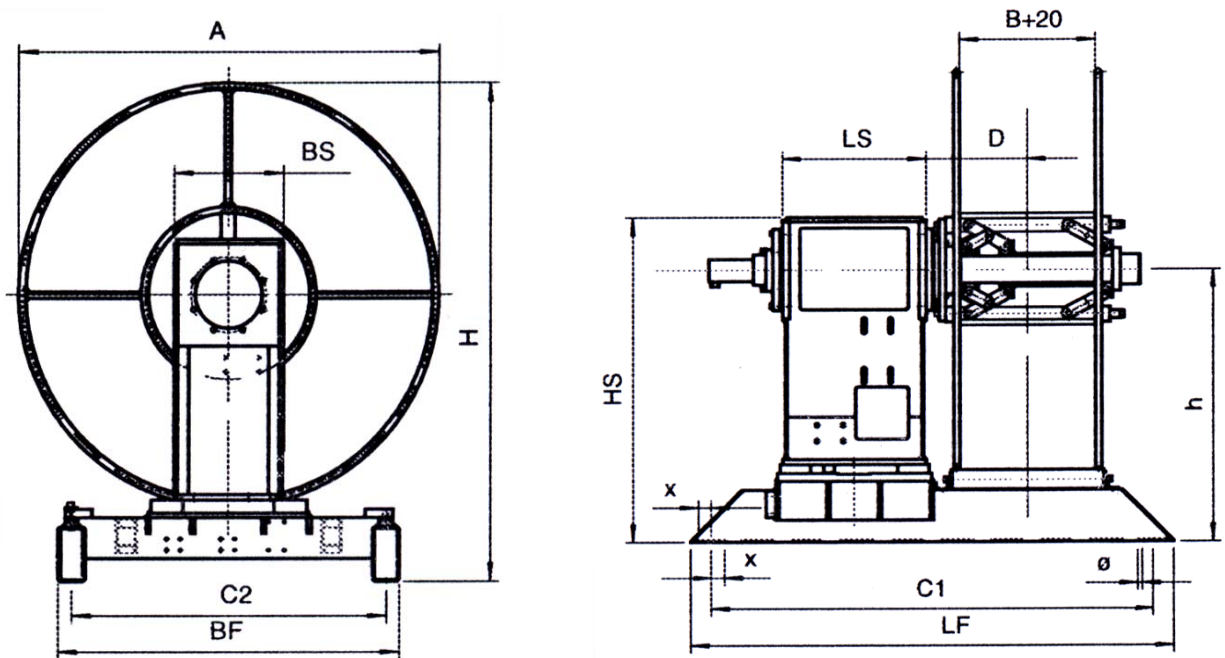
**Options**

Optional equipment for the Decoiler on a separate Optionlist.

| Technical Data        |       | H1200   | H2000   |
|-----------------------|-------|---------|---------|
| Coil weight max       | kg    | 1200    | 2000    |
| Outside diameter max  | mm    | 1500    | 1500    |
| Width of material max | mm    | 500     | 500     |
| Slewing brackets      | units | 3       | 4       |
| Mandrel expanded      | mm    | 430-565 | 430-565 |
| Weight                | kg    | 650     | 680     |

SMVs Driven Decoiler DF also includes the following data.

| Technical Data                     |       | H1200DF | H2000DF |
|------------------------------------|-------|---------|---------|
| Rotation speed                     | r/min | 0-16    | 0-16    |
| Coil speed at $\varnothing$ 500 mm | m/min | 0-25    | 0-25    |
| Motor power                        | kW    | 0,37    | 1,1     |
| Weight                             | kg    | 700     | 730     |



| Dimen-<br>sions                      | B <sub>max</sub> | L <sub>max</sub> | A <sub>max</sub> | LF   | BF   | LS  | BS  | HS   | C1   | C2   | H <sub>max</sub> | h    | D           | x  | $\varnothing$ |
|--------------------------------------|------------------|------------------|------------------|------|------|-----|-----|------|------|------|------------------|------|-------------|----|---------------|
| H1200<br>H1200DF<br>H2000<br>H2000DF | 500              | 1850             | 1540             | 1850 | 1250 | 546 | 400 | 1242 | 1690 | 1150 | 1812             | 1042 | 140+<br>B/2 | 50 | 18            |